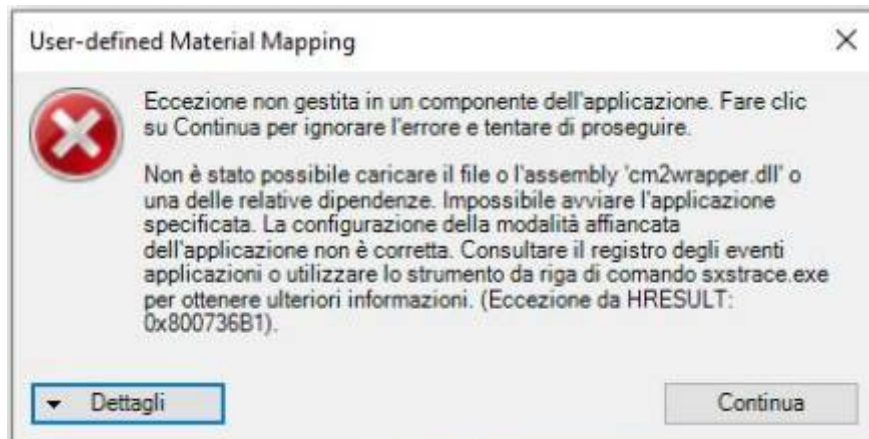


# Error for Link Revit 2023

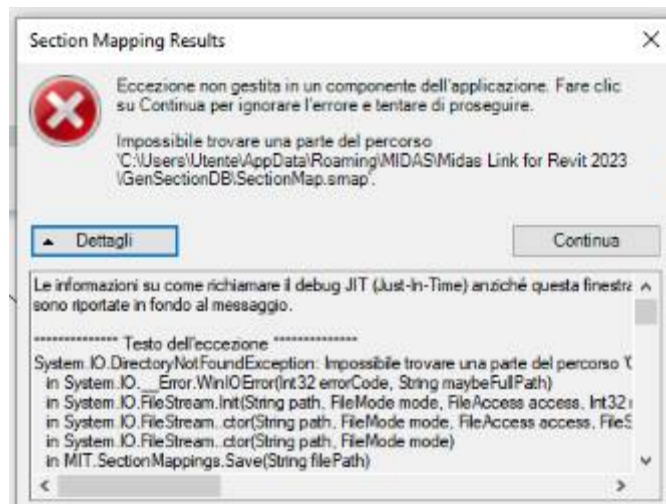
## 1. Cause (Guess)

①



- Loading error due to blocking by a firewall of Windows OS or changing settings of Revit
- Error in installing. (Some files are not installed.)

②



- Folders and files that should be created automatically when mapping sections are blocked by OS security.

## 2. Solution 1

①

- Copy the files in the normally installed folder and paste them to the PC having the error.  
(You can download it from the link below.)
- Folder Location : C:\Program Files\MIDASIT\Gen Link for Revit 2023
- Download : [https://patch.midasit.com/00\\_MODS/en/01\\_program/nGen/Installer/nGen\\_Link\\_for\\_Revit\\_20xx\\_To\\_overwrite.zip](https://patch.midasit.com/00_MODS/en/01_program/nGen/Installer/nGen_Link_for_Revit_20xx_To_overwrite.zip)

\*\* For Gen-Revit Link :

(Folder Location : C:\Program Files\MIDASIT\Gen Link for Revit 20XX)

[https://patch.midasit.com/00\\_MODS/en/01\\_program/Gen/Installer/Gen\\_Link\\_for\\_Revit\\_20xx\\_To\\_overwrite.zip](https://patch.midasit.com/00_MODS/en/01_program/Gen/Installer/Gen_Link_for_Revit_20xx_To_overwrite.zip)

[https://patch.midasit.com/00\\_MODS/en/01\\_program/nGen/Installer/Error\\_for\\_Link\\_Revit\\_2023.pdf](https://patch.midasit.com/00_MODS/en/01_program/nGen/Installer/Error_for_Link_Revit_2023.pdf)

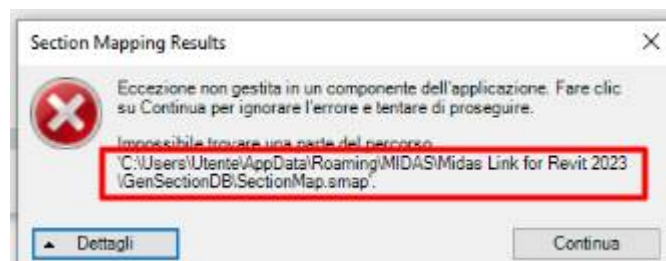
②

- Manually create a folder in the same path as below.
- Directly create "SectionMap.smap" file in "GenSectionDB" folder.

\* How to create 'smap' file?

→ After creating a '\*.txt' file newly, modify the extension to 'smap'. (It doesn't matter if there is no content)

→ or Download "SectionMap.smap" for this linke : [\[Download\]](#)



(C:) > 사용자 > yiseo > AppData > Roaming > MIDAS > Midas Link for Revit 2023 > GenSectionDB

이름	수정한 날짜	유형	크기
Eurocode Materials.adsklib	2022-02-08 오후 3:22	ADSKLIB 파일	655KB
material.aconfig	2022-02-08 오후 3:22	ACONFIG 파일	1KB
MaterialMap.mmap	2022-02-08 오후 3:22	MMAP 파일	6KB
section.aconfig	2022-02-08 오후 3:22	ACONFIG 파일	1KB
SectionMap.smap	2022-02-08 오후 3:22	SMAP 파일	654KB

### 3. Solution 2

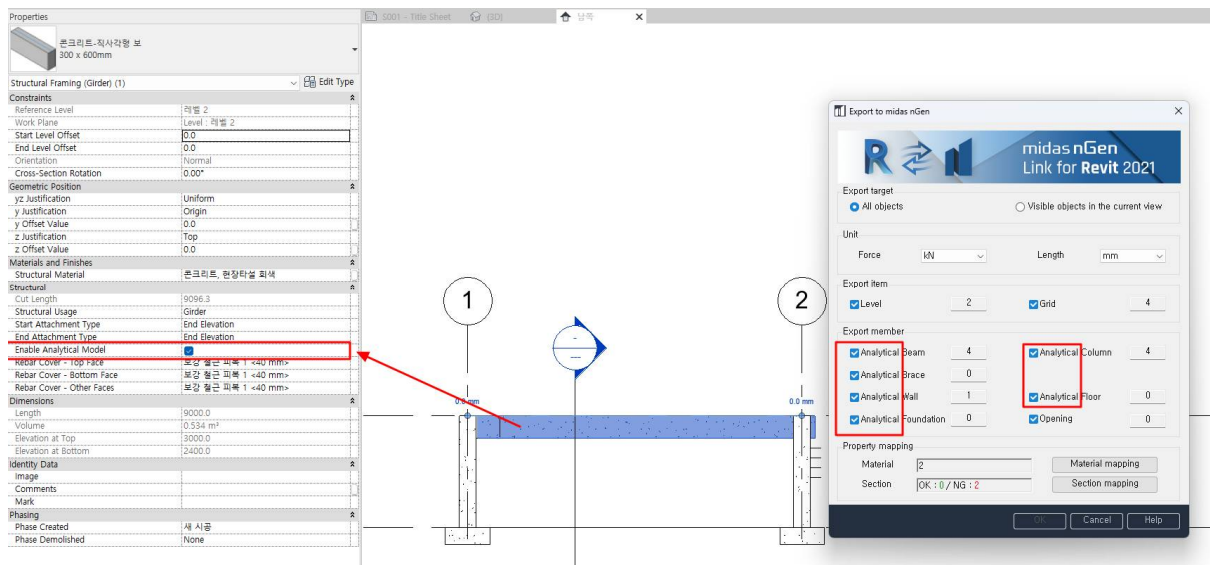
Remove the existing Revit link and reinstall with the latest Linker([download](#)). If the files remain in the folder below, be sure to manually delete it. It is important to completely delete all files before reinstalling.

C:\Program Files\MIDASIT\Midas Link for Revit 2023

# Revit 2022 & Revit 2023

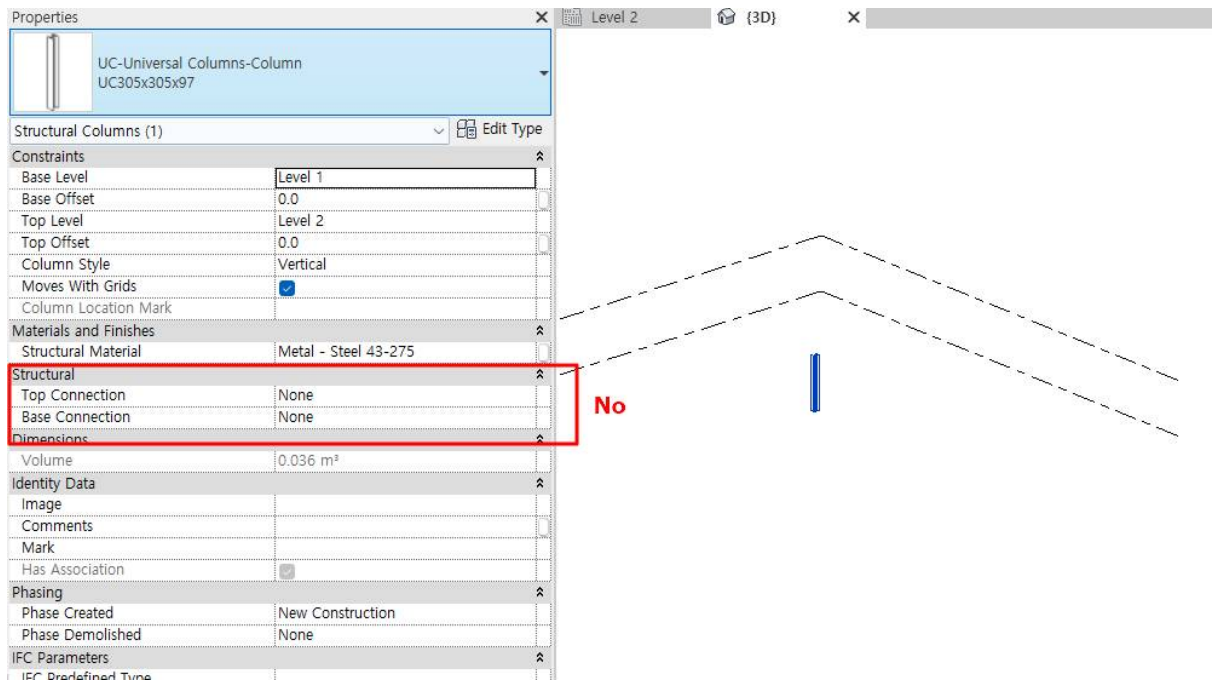
## 1. Revit 2022

Set analytical models in the properties table as shown below. Only elements checked as the analytical model are exported to midas SW.



## 2. Revit 2023

Since "Enable Analytical Model" has been removed from the properties table, you cannot set the analytical model in 'Structure' tab.



In Revit 2023, you can set up an analytical model in 'Analyze>Analytical Automation'.

Please refer to the video

[https://patch.midasit.com/00\\_MODS//en/01\\_program/nGen/Installer/Revit2023\\_link.mp4](https://patch.midasit.com/00_MODS//en/01_program/nGen/Installer/Revit2023_link.mp4)